



Patron Minibeasts



KAREN LUKE FILDES

Fine Artist

Born and raised in the Pacific Northwest by a pair of self-professed nature lovers, Karen Luke Fildes has spent the past two decades dedicating her love, respect and awe for the natural splendor of the Northwest, using oil and canvas. Her works have been displayed at galleries and exhibits in the Northwest, Canada and Germany. She is a recipient of Pierce County Arts Commission's Margaret K. Williams Award for Excellence in the Arts and has recently finished a series of 500 landscapes studying the water cycle by focusing on Northwest watersheds in the process of restoration.

"I've been collecting innocent moments with light on land, atmosphere, and water with sacred respect for the water cycle. Heaven and earth are connected because of water's ability to evaporate, condense and flow. Children grow, the earth moves, storms come and go, technology races, while wars and divorces, weddings and births--bring me back to the assurance that the sun continues to rise and set, and the water continues to cycle between the sky and sea. It is the moments of truth in nature's sanctuaries, and how they are touched by light, that seem worth preserving to me."

Individual patronage will allow her to complete the cycle by 2024. The idea that 15 people would choose to support her work in the next year is not just exciting, but humbling and inspiring.

"There isn't enough gratitude I have for the encouragement to share the good news of renewal. I can't wait to create these 15 unique pieces for my 2023-24 Patrons."





“Art is art, nature is nature, you cannot improve upon it...” Emily Carr

*We are a drop on a
journey in a cycle.*

*The cycle cradles you.
The cycle cradles me.*





How best to be a patron of this watershed story?

4 easy ways to be a patron of the work of Karen Luke Fildes

1. **Buy a painting** – *one painting purchased can help keep her making art and spreading the joy of curiosity in her volunteer work with The Field Guide to the World and school visits on watershed health.*
2. **Buy a painting and pay in installments** – *not all paintings are eligible for a payment plan, but please ASK. As much as Karen loves making art, she loves seeing her art go to people who appreciate it even more.*
3. **Provide a place to sell art** – *through trunk shows or pop-up art galleries. Karen will bring her work, throw a happy hour or tea party, and offer a short class on an her pet topics.*

And the very best way is:

4. **Buy her art by joining her special group of Patron Minibeasts** – *15 people who agree to put a future painting on lay-away by making monthly payments (\$50, \$100, \$150 or \$300) for a unique piece of art painted in collaboration with the purchaser. This will give Karen a monthly income for a year (June 2023 to June 2024) offering her the security of knowing her rent will be paid.*

This is something she really needs.



“Minibeast”

- what even is this?

In this Karen’s world, the powerful voice of innocence is found in peculiar places.

Current and future works will strive to capture the minibeast spirit –

small moment, big voice.



What is different about this year's Minibeast series?

Karen Luke Fildes has recently finished 500 paintings in a series that began over the past ten years... from sky to sea, with the purpose to find an answer to the question that the children have been asking, "Is there hope for the living things?" Her dedication focuses on watershed health, the human connection, and the possibility for renewal. Everybody lives downstream. This year, she is formatting photos of her paintings into a series of seven artbooks for children of all ages. Together, they tell a complete tale of the water cycle.

Karen's Minibeast patrons of the last four years have inspired her to find the poetry and the images to create the story, and now with your help, she can fill in the pieces that are missing. This year's muses will have a special role in helping her bring talks to classrooms in the form of a slide show called, "We Are a Drop". With this message, we can feel ourselves connected to each other as drops make a cloud, a stream, an estuary, and ocean. The good news of restoration is calming for worried children, and energize a positive relationship with our own local watershed.

Who are the Patron Minibeasts?

They are a group of 15 art lovers who put a future painting from Karen, for themselves or as gifts, on a lay-away plan over a 12-month period.

This will allow Karen to continue her growth as a fine artist.

Karen will ask each Patron Minibeast questions about their likes and hopes, what kind of paintings speak to them, what colors excite them, and then she will paint a unique painting within two months of the completion of the lay-away payments.

The Patron Minibeasts *will periodically get updates, surprises, and special connection about the process throughout the year.*

Payments plans will still be available for some paintings, but by committing as a Patron Minibeast, you'll become a part of a special troupe of muses – your you-ness is an important part of this project, to be known and to be portrayed in a work of art.

Some patrons may want to sponsor educational and outreach work instead of or in addition to a painting commission. Get in touch with the artist to craft exactly the right Minibeast plan for you.

Payments accepted via Paypal, Venmo, Square and good old-fashioned check.

5 Minibeasts

*\$50 a month for 12 months
12"x12" (or so) painting
OR sponsor a school visit*

5 Minibeasts

*\$100 a month for 12 months
16"x16" (or so) painting
OR sponsor two school visits*

3 Minibeasts

*\$150 a month for 12 months
24"x24" (or so) painting
OR sponsor three school visits*

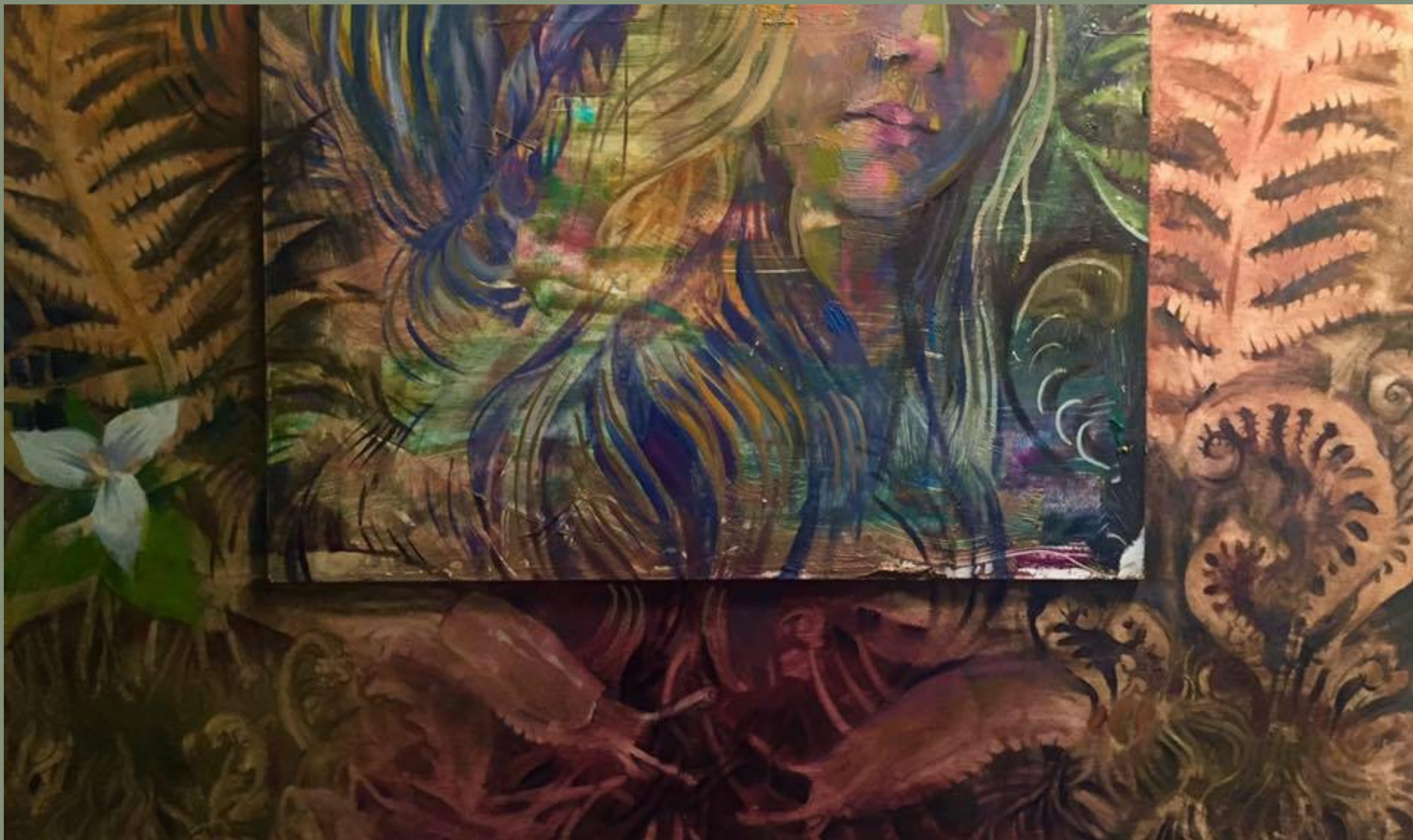
2+ Minibeasts

*\$300 a month for 12 months
36 x 20 (or so) painting, a very first draft of the first volume of the children's book series, and sponsor a school assembly*



Other ways to support
Karen Luke Fildes's work...

COMMISSIONS



*Consider a commission?
Contact Karen to discuss possibilities.*



MURALS and ODD REQUESTS

Just ask. Who knows?



Financially support the continued creation of
The Field Guide to the World

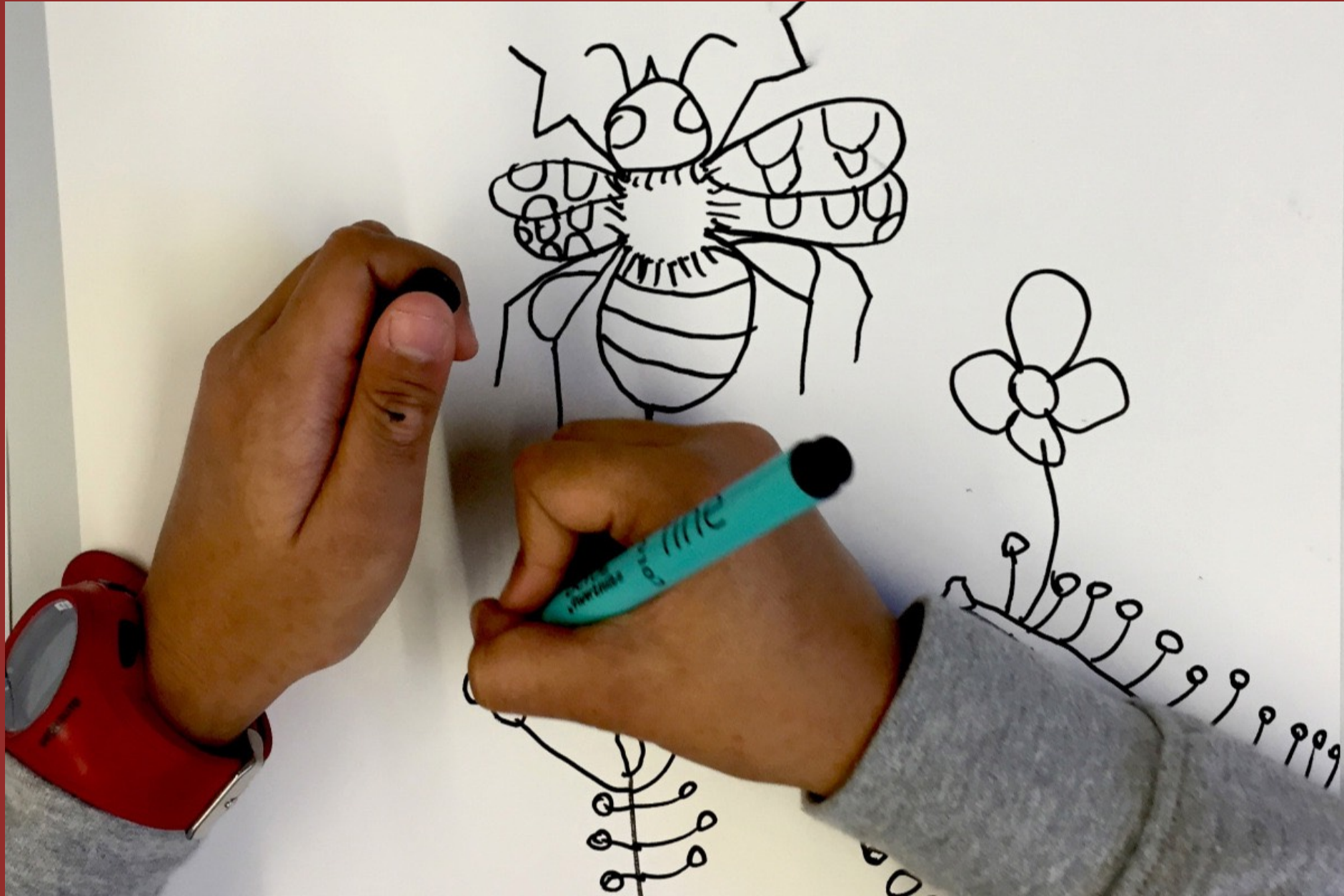
This is an ongoing passion, that children are the teachers. Shall we make a field guide to the living things in your area?

This project took a dramatic pause during the pandemic, and is calling out to be resuscitated. This year's patrons will automatically be contributing to a new phase of growth so this project can thrive.

Website:

<http://www.thefieldguidetotheworld.com/>

Children are learning that every line is a good line when studying the living things. They realize a sense of belonging when they study the living things in their own watershed.



“I am pushing myself as an artist.
I can't tell you how grateful I am that
people believe in my walk.

Thank you in advance,
my 2023-24 patrons.”

KLF





Contact Information:

For private art classes, direct purchases, and commissions:
<https://karenlukefildes.org/contact>

For 2023-2024 Patron Minibeast Membership Form:
<https://karenlukefildes.org/minibeastblog>

Karen Luke Fildes Facebook page:
<https://www.facebook.com/karenlukefildes>

Karen Luke Fildes Website
<http://karenlukefildes.org/>